

شیر برقی پنوماتیک پت

MODEL :-



alisanat.com



copyright © photo by alisanat.com

alisanat.com



copyright © photo by alisanat.com

alisanat.com



copyright © photo by alisanat.com

alisanat.com



copyright © photo by alisanat.com

alisanat.com



copyright © photo by alisanat.com

alisanat.com



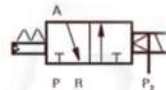
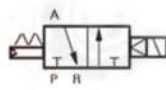
copyright © photo by alisanat.com



■ Character

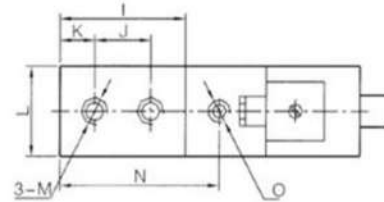
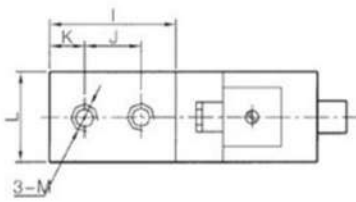
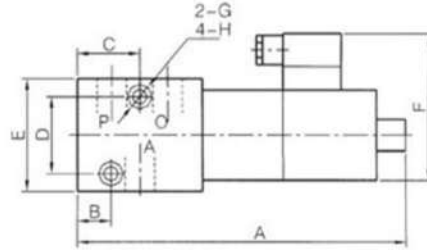
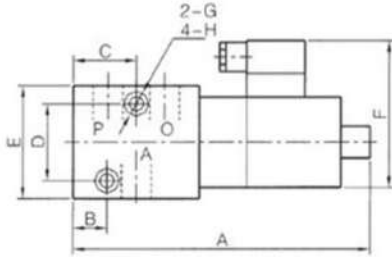
This product can be used under high pressure circumstance, safety, has been adopted widely in high pressure pneumatic equipment such as Blow Bottle Machine, especially apply successfully in equipment that produce special shape, big capacity polyurethane bottle.

■ Graphics Sign

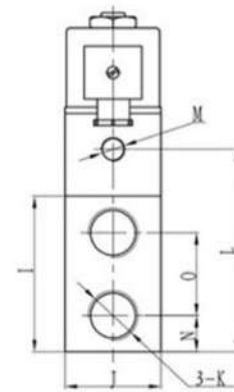
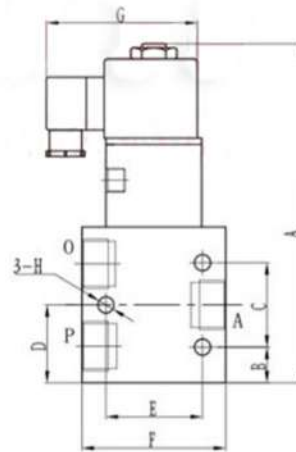
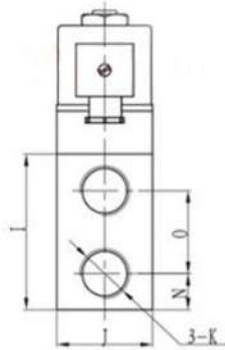
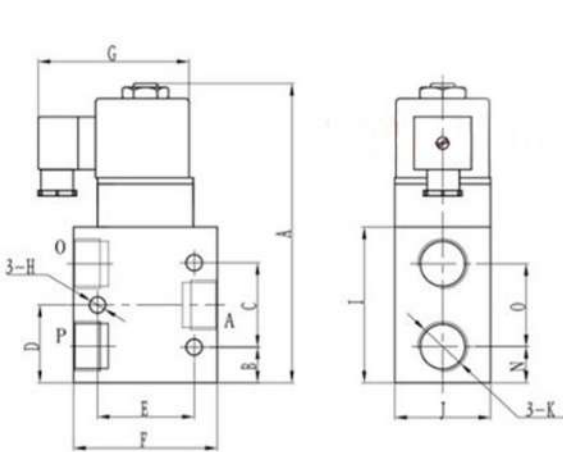


■ Technical Parameter

| | | |
|-----------------------|----------------------------|----------|
| Pressure Range | 0.15 ~ 2.4 MPa | |
| Medium Temperature | -5 ~ 60 °C | |
| Applicable Medium | Air | |
| Lubrication | Needless | |
| Nominal Diameter | 8 mm | 15 mm |
| Direction Change Time | ≤ 0.04 S | ≤ 0.08 S |
| Pipe Size | G1/4 | G1/2 |
| Power | AC220V; 20VA DC24V; 13W | |



| K | A | B | C | D | E | F | G | H | I | J | K | L | N | O |
|------|-----|----|----|----|----|----|-----|----|----|----|------|----|----|------|
| G1/4 | 132 | 15 | 28 | 34 | 50 | 65 | 6.5 | 11 | 56 | 25 | 15.5 | 40 | - | - |
| G1/4 | 145 | | | | | | | | | | | | 75 | G1/8 |



| K | A | B | C | D | E | F | G | H | I | J | L | M | N |
|------|-----|------|----|------|----|----|----|-----|----|----|------|------|------|
| G1/2 | 140 | 15.5 | 34 | 32.5 | 40 | 60 | 65 | 6.5 | 65 | 60 | - | - | 10.5 |
| G1/2 | 157 | | | | | | | | | | 84.5 | G1/8 | |



علی صنعت

طراحی و تنظیم این کاتالوگ صد درصد توسط شرکت علی صنعت انجام شده
و تمامی حقوق برای شرکت علی صنعت محفوظ میباشد

The design and layout of this catalog have been 100% done by
Ali Sanat Company and all rights are reserved for
Ali Sanat Company

021-33112229

09123118117

www.alisanat.com